

Environmental Commitment



OglethorpePower

Our Commitment to *Environmental Excellence*

At Oglethorpe Power Corporation, our commitment to the environment is rooted in four key principles: ***compliance, prevention, communication and continuous improvement.***

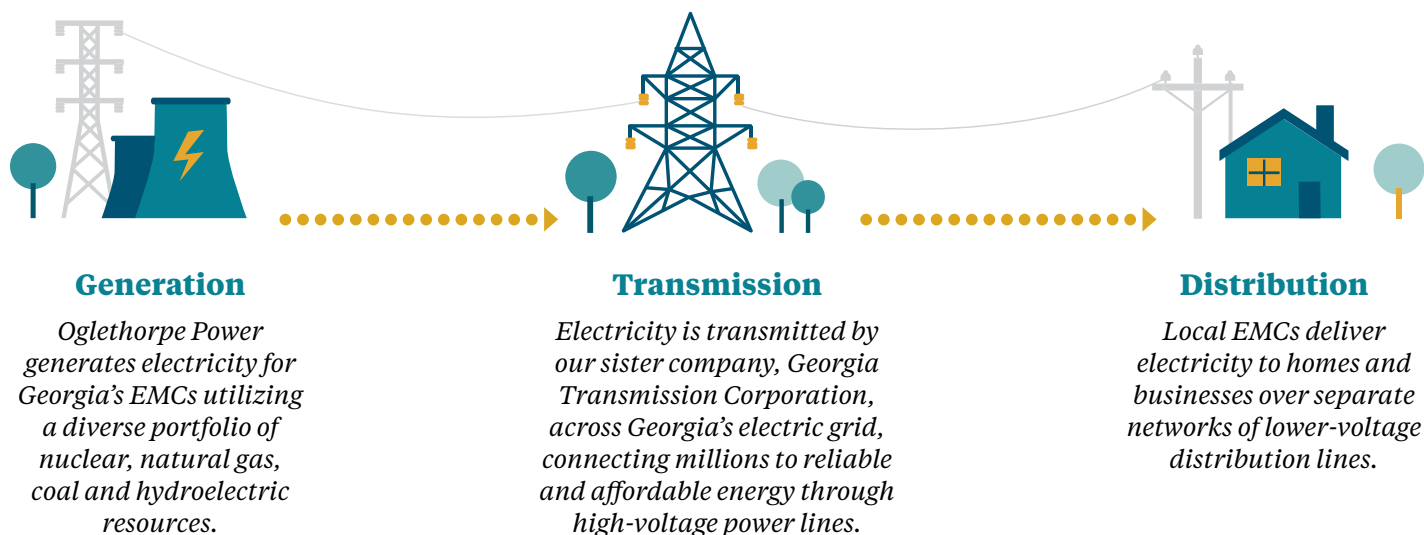
- We comply with all applicable environmental laws and regulations and implement programs and procedures to assure compliance.
- We strive to minimize adverse impacts to the environment and protect our employees and surrounding communities by employing environmentally sound technologies and operating procedures.
- We communicate our commitment to environmental quality to our employees, Members and partners. In addition, we ensure employees with specific responsibilities related to our environmental activities are well trained and prepared.
- We continuously look for opportunities to improve our environmental performance through the implementation of our Environmental Management System.

These principles drive our efforts to provide safe, reliable and affordable energy generation to 38 Electric Membership Corporations (EMCs), while helping to preserve the environment for future generations.

A Generation Cooperative Serving Our 38 *Member Cooperatives*

Oglethorpe Power is among the nation's largest wholesale power supply cooperatives. Our Member/Owners are 38 of Georgia's EMCs; electric utilities that distribute power to their customers — which include residents, businesses and public institutions — or about 4.3 million people across Georgia.

How We Operate



Environmental Responsibility

Helping to ensure a safe, clean, healthy environment is at the heart of Oglethorpe Power's Environmental Management System. Over the years, we have invested nearly \$1.2 billion in environmental projects that have contributed to improved air and water quality in the state of Georgia. Here are just some of the initiatives that highlight our environmental accomplishments:

Compliance

Our environmental performance record reflects full compliance amidst the increasingly stringent rules and regulations that govern our operations. We have more than a decade of stellar environmental compliance with the Georgia Environmental Protection Division and the U.S. Environmental Protection Agency.

Investment in Emission Controls

Air quality control systems installed at our co-owned coal plants have significantly reduced emissions of sulfur dioxide (SO₂), oxides of nitrogen (NO_x) and mercury. Our investments in various types of emission control equipment total more than \$1 billion.

Water Conservation

Water is used in electricity generation for cooling at our steam-cycle coal and nuclear plants, and is used to a lesser extent in simple-cycle and combined-cycle natural gas plants. It also serves as pollution control for NO_x and for SO₂ scrubbing. Finally, water is the renewable fuel for our pumped-storage hydroelectric plant. Oglethorpe Power is also supporting research on methods for reducing water consumption through the Electric Power Research Institute (EPRI).

LEED Gold Certified

We have worked hard to increase the efficiency of our energy and water use, while incorporating sustainable practices into procurement, waste disposal and campus grounds operations. By continuing to improve sustainability and efficiency programs, Oglethorpe Power headquarters has earned LEED Gold Certification and stands with the elite ranks of green buildings across the nation.

Sustainability Programs

Our green initiatives help maintain a more sustainable environment and include: single-stream recycling, reserved parking for carpoolers and hybrid vehicles, alternative work schedules, and the installation of electric vehicle charging stations.



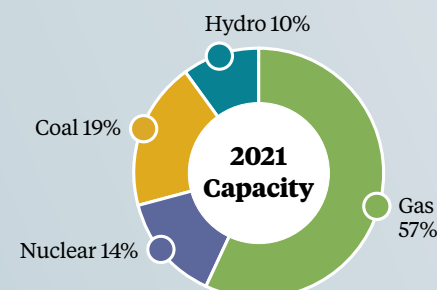
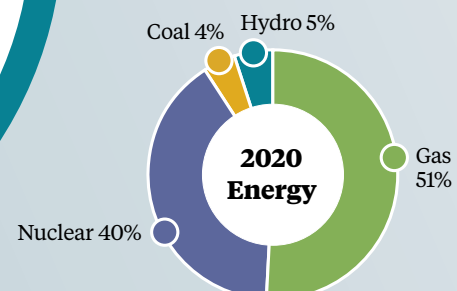
Ongoing Research

Over the years, we have partnered with EPRI to participate in a number of environmental research efforts. The goals of these research projects range from finding cost-effective ways to reduce greenhouse gas emissions to understanding the impacts of particulate matter and other air pollutants on human health and welfare.



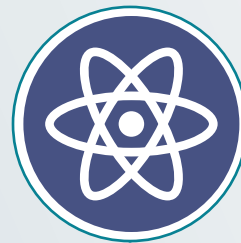
Generation

Through our balanced and diverse portfolio, including hydro power and carbon-free nuclear generation, we are committed and well-positioned to meet the demands of a transitioning energy landscape.



Community Service

As a responsible steward of our community, we are involved with a number of service projects that help maintain and preserve the environment. Employee volunteers participate in and the corporation supports Rivers Alive, Keep Georgia Beautiful, The Nature Conservancy and many other organizations to help care for natural habitats.



Nuclear

We have 30 percent ownership in two nuclear plants (four units), with two additional nuclear units under construction. These are the first nuclear units being built in the United States in more than 30 years. This combined fleet of nuclear generation plants will ensure safe, reliable, clean and carbon-free base-load energy for many decades to come.



Natural Gas

We own and/or operate a fleet of nine combined-cycle and simple-cycle gas-fueled generation facilities. Natural gas is a highly efficient fuel, resulting in fewer emissions of nearly all pollutants than from other fossil fuels.



Coal

We continue to make substantial investments to limit environmental impacts from our coal assets, while at the same time optimizing their power generation and economics. Additionally, our coal generation has declined by 90% since 2008, resulting in a significant reduction in carbon dioxide emissions, the equivalent of taking more than 1.5 million cars off the road annually.



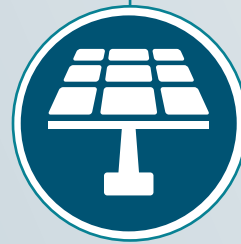
Hydro

We are the operator and majority owner of a pumped-storage hydroelectric plant, which provides a clean energy source because it does not emit any pollutants into the atmosphere. To generate electricity during peak-load periods, the plant uses water that falls downhill from the upper to the lower reservoir. This water is then pumped back uphill using electricity from other sources during non peak-load periods.

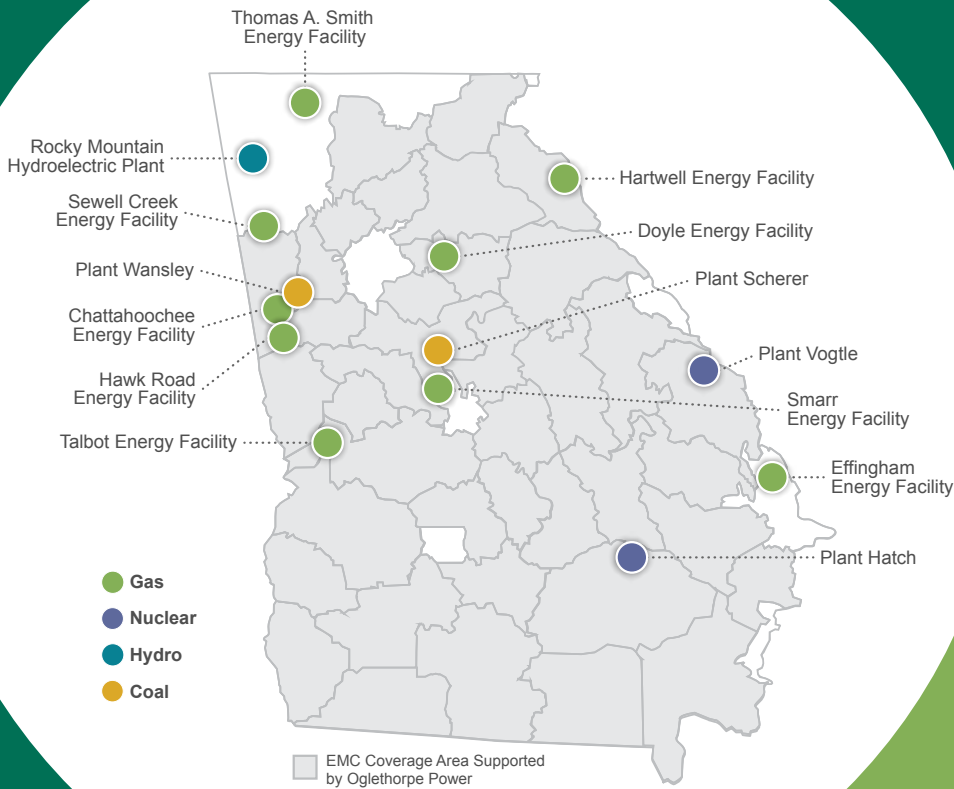


Other Renewables

Renewable energy resources are clean, carbon-neutral and constantly replenished. Our Member EMCs have made significant investments in renewable energy, either directly or through their membership in Green Power EMC, and have a total capacity of 635 megawatts in solar and other renewable resources. Green Power EMC is a related renewable energy company owned by its Members, to which Oglethorpe Power provides management and various contractual services.



Oglethorpe Power's Generation Facilities



To learn more about
Oglethorpe Power, visit
www.OPC.com.



2100 East Exchange Place
Tucker, GA 30084-5336
770-270-7600 • 800-241-5374
www.opc.com

This institution is an equal opportunity provider and employer.



Printed on Flo Cover and Text, 10 percent recycled content.